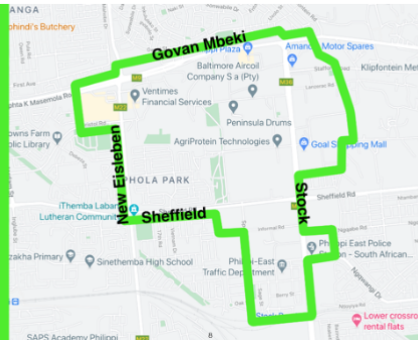


[View this email in your browser](#)



powered by:



CITY OF CAPE TOWN
ISIXEKO SASEKAPA
STAD KAAPSTAD

Dear Derick

I'm happy to send you the latest news from the PMU Team and Philippi Precinct.

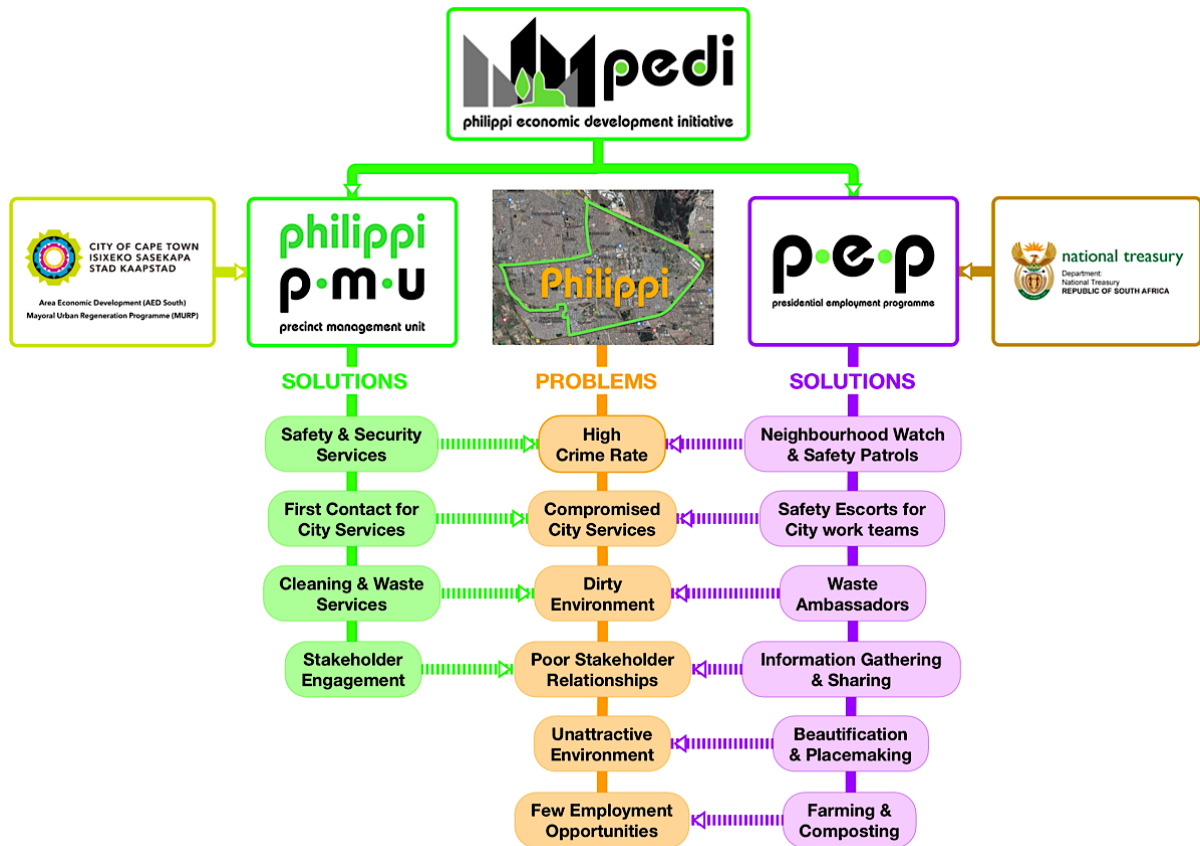
This month's newsletter is all about the **Presidential Employment Programme (PEP) grant** that Philippi has been blessed with and that was awarded to the City of Cape Town.

The [Philippi Economic Development Initiative \(PEDI\)](#) has the privilege to implement the PEP that will run until 30 June 2022.



Thomas Swana (CEO: PEDI) and City officials Erika Naudé (Acting Director: Spatial Planning and Environment) and Frank Cumming (Director: Urban Catalytic Investment Department), at the PEP signing ceremony (see [City media release](#)).

Most of the PEP employment opportunities will mirror and amplify the work already being done by the PMU. The PMU Team is therefore managing the programme's rollout and we have appointed two project managers, Nyameka Mguzulo and Ncedo Mashihhi, to spearhead operations.



Since mid-January, we have hosted information sessions to explain the PEP opportunity to Philippi residents and the response has been overwhelmingly positive.

Nobuhle Zawula (31) last worked in 2016. She says, *"I was so happy when I heard of this job opportunity. The money will come in handy, because I will be able to help my mother who has been using her pension money to take care of us."*

Nomthandazo Nkwinti (43) likes the fact that even older people are given a chance. *"I was stressed about the cost of sending my son to initiation school, but then I received a call informing me about this opportunity. I'm very grateful."*



The PMU's Sonwabile Dwangu hosting a PEP information session for Philippi residents.

The aim of the PEP grants is to alleviate COVID's impact on communities with high unemployment rates, through short-term employment opportunities.

We seek to stretch the PEP's aim by adding practical skills training and life-skills development to the programme and help participants improve their chances of achieving sustainable livelihoods.

- As much as each participant will do meaningful work, they will also have opportunity to learn life-skills such as personal management for building a better life; and practical skills to equip them for finding a job after the PEP's completion.

The induction of 280 of 440 participants to be employed in the PEP's primary phase began last week.

- In selecting the programme participants, we were permitted to choose 60% directly from community leaders and volunteers — all of them unemployed, yet verified as serving their community well and without financial gain.
- In order to ensure fairness and broad acceptance of the programme's implementation, we have been working very closely with all community structures in Philippi. We commend them for putting aside ideological and political differences to unite around a development agenda.



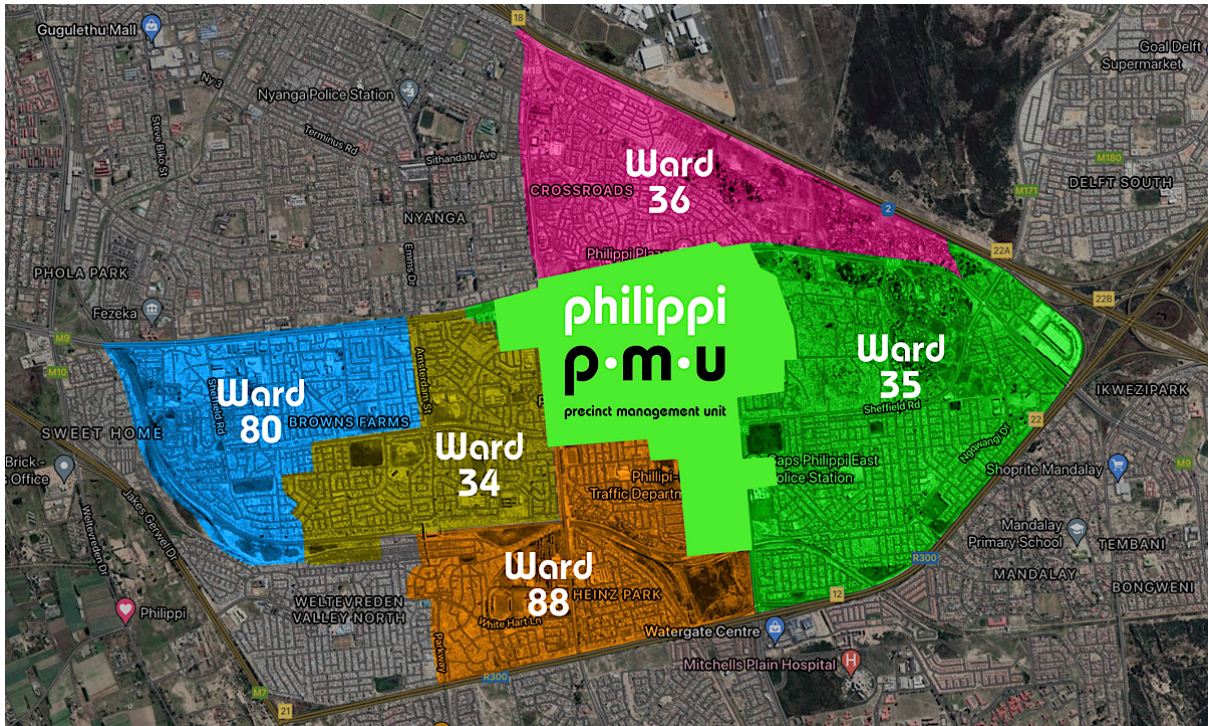
PEP safety patrol and community escort teams at a training session by [The Safety Lab](#).

The PEP participants will be deployed in five clusters: Safety, Cleaning, Farming & Composting, Placemaking & Beautification, and Information.

Training and deployment have already started and will be completed during the first half of February.

The SAFETY cluster is divided in Precinct-based and Ward-based teams.

- Precinct safety patrols will patrol the four main roads (Stock, Govan Mbeki, Sheffield, New Eisleben), as well the side-streets of Philippi East Industria. They will monitor bylaw compliance, report crime, do crime-mapping and provide pointsman services during rush hours at the main intersections.
- Ward-based teams will do escort duty for City maintenance crews and contractors as a primary function and will otherwise do patrol duties within their wards in crime hotspots.



The **CLEANING cluster** is divided in Informal Settlement and Ward-based Waste Ambassadors.

- The informal settlement teams will be active in Marikana, Winnie Madikizela, Seskhona and Siyangena. They will be extracting food waste from these communities for processing at ROSE — the PEDI composting unit at the Philippi Fresh Produce Market — as well as diverting recyclable waste from landfill sites.
- The ward-based teams will focus on cleaning public spaces as well as detention ponds.



The FARMING & COMPOSTING team will be joining the [Philippi Agrihub](#) team at the Philippi Fresh Produce Market in their farming and composting endeavours.

The PLACEMAKING & BEAUTIFICATION team will be trained in practical skills like mural art, decorating street furniture, mosaics and street greening to create dignified spaces in Philippi public spaces.

- They will receive training from the [Philippi Village](#) placemaking team and will then apply their new skills in a few strategic projects in the Philippi Precinct.

The INFORMATION cluster has a work stream that will gather data and another that will disseminate information in the Philippi community.

- The data collection unit will be doing surveys in all the Subcouncil 13 wards. These surveys will aim to acquire environmental, socio-economic, infrastructure, demographic and other data to inform the shaping of a transformational vision of the Philippi Opportunity Area.
- The community communication team will spread information that will bring awareness and knowledge in areas such as health, environment and social development, as well as make known opportunities for development, education, employment, etc.

We believe that the PEP opportunity has the potential of being a catalyst in the transformation of Philippi. We will keep you posted.

Kind regards

Egbert Wessels
PMU Manager

Contact us

Contact info

Tel: [021 371 9824](tel:0213719824)

WhatsApp: [081 549 1519](tel:0815491519)

Email: pmu@pedi.org.za

[Facebook.com/philippi.pmu](https://www.facebook.com/philippi.pmu)

[Facebook.com/pedi.org.za](https://www.facebook.com/pedi.org.za)

Office address


Unit 14, 2nd floor,

The Hub, Philippi Village,

1 Cwangco Crescent,

Philippi 7781

[Find our location on Google](#)

 Follow us on Facebook

Copyright © 2022 Philippi Precinct Management Unit, All rights reserved.

Want to change how you receive these emails?
You can [update your preferences](#) or [unsubscribe from this list](#).

Grow your business with  **mailchimp**